

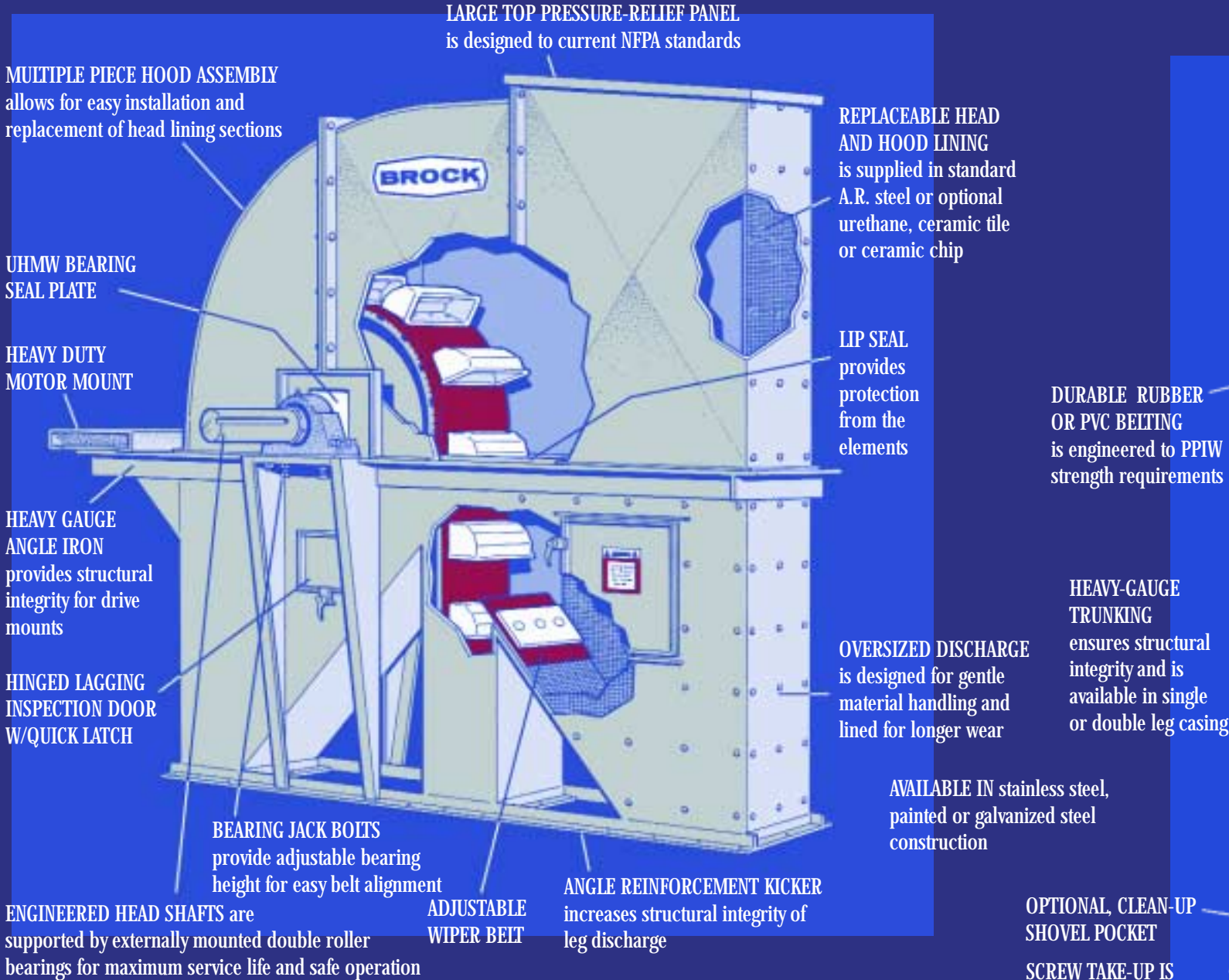
*COMMERCIAL BUCKET ELEVATORS*





# COMMERCIAL BU

## GENTLE GRAIN HANDLING, DURABLE EQUIPMENT



Brock's Bucket Elevator Systems are the right choice for the gentle handling of grain in a commercial grain facility. These bucket elevator models are designed for long life and are available in capacities ranging from nearly 1,600 to over 50,000 bushels (43 to 1380 metric tons) per hour and a discharge height of up to 200 feet (60 meters) or more.

### ACCESSORIES

- Large Work Platforms (Allow easy access to drive/motor)
- Ladder and Cage
- Transitions
- Motion, Alignment and Bearing Sensors
- Elevator Towers

### DRIVES

- Shaft Mounted (Single or Dual)
- Chain
- Direct Couple
- V-Belt
- Poly Chain
- HTD

### OPTIONAL, CLEAN-UP SHOVEL POCKET

SCREW TAKE-UP IS designed for rugged duty

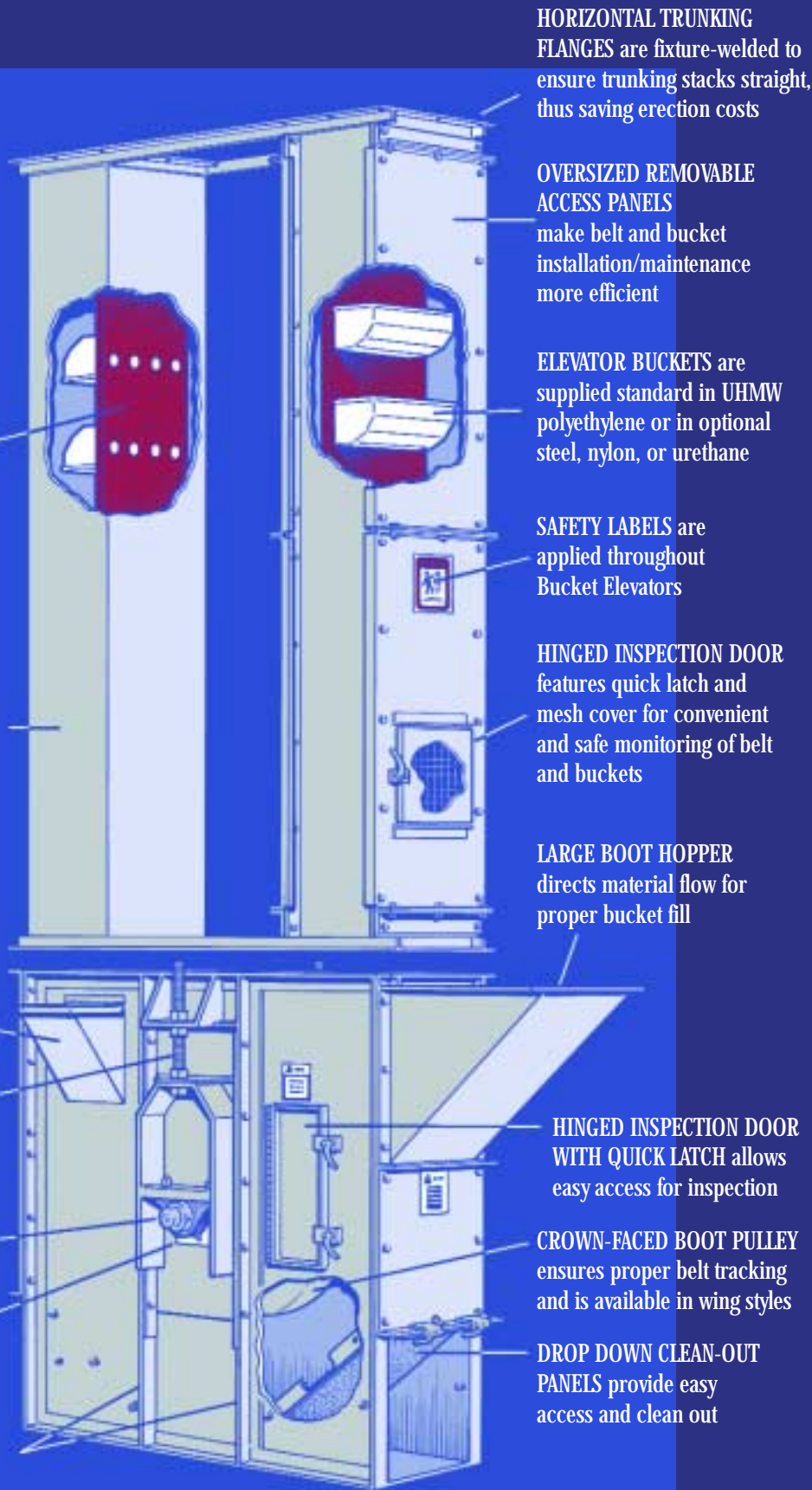
EXTERNALLY MOUNTED PILLOW BLOCK BEARINGS prevent bearing exposure to boot interior

### UHMW SHAFT SEAL PLATE

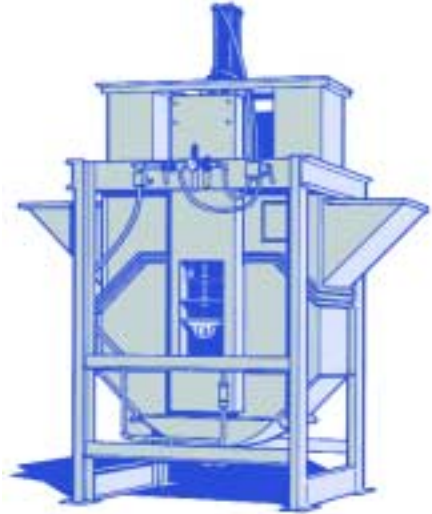
BOOT SIDE PANELS are reinforced with structural angle iron

# BUCKET ELEVATORS - DI

## STANDARD, SELF-CLEANING, OR SELF-ADJUSTING BOOT



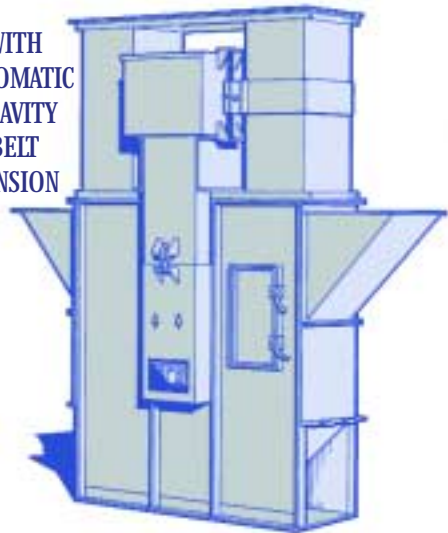
### SELF-CLEANING BOOT



- Self-cleaning bottom plate for superior clean out
- Totally enclosed housing for clean operation
- Easily replaceable A.R. steel bottom
- Adjustable bucket clearance from 1/16 to 3 inches
- Adjustable shaft alignment for belt tracking
- Optional motion and belt-misalignment detection
- Belt tension devices include manual, gravity, pneumatic, and hydraulic
- Optional "air-assist" clean-out jets

### SELF-ADJUSTING BOOT

WITH  
AUTOMATIC  
GRAVITY  
BELT  
TENSION



- Automatically maintains belt tension & alignment
- Self-adjusting to temperature and humidity changes
- Adjustable shaft alignment for belt tracking
- Optional motion and belt-misalignment detection
- Totally enclosed housing for clean operation

# D I F F E R E N T B Y D E S I G N



GRAIN STORAGE BINS

For grain storage, conditioning, and handling products, BROCK® Systems are different by design.

The Brock Difference is:

- An expanding line of innovative products designed to help save labor and money.
- The top quality performance and classic product durability closely associated with the BROCK® name.

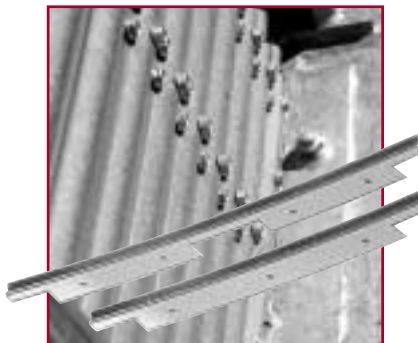
To get the difference that only these and other Brock products can provide, contact us today.



GUARDIAN® AERATION FANS



ENERGY MISER® GRAIN DRYERS



FULL SWEEP™  
Bin Anchoring System



BIN ACCESS DOORS



ENCLOSED ROLLER-BELT CONVEYORS



MODEL ABC™ COMMERCIAL BIN SWEEPS

# BUCKET ELEVATOR SPECIFICATIONS

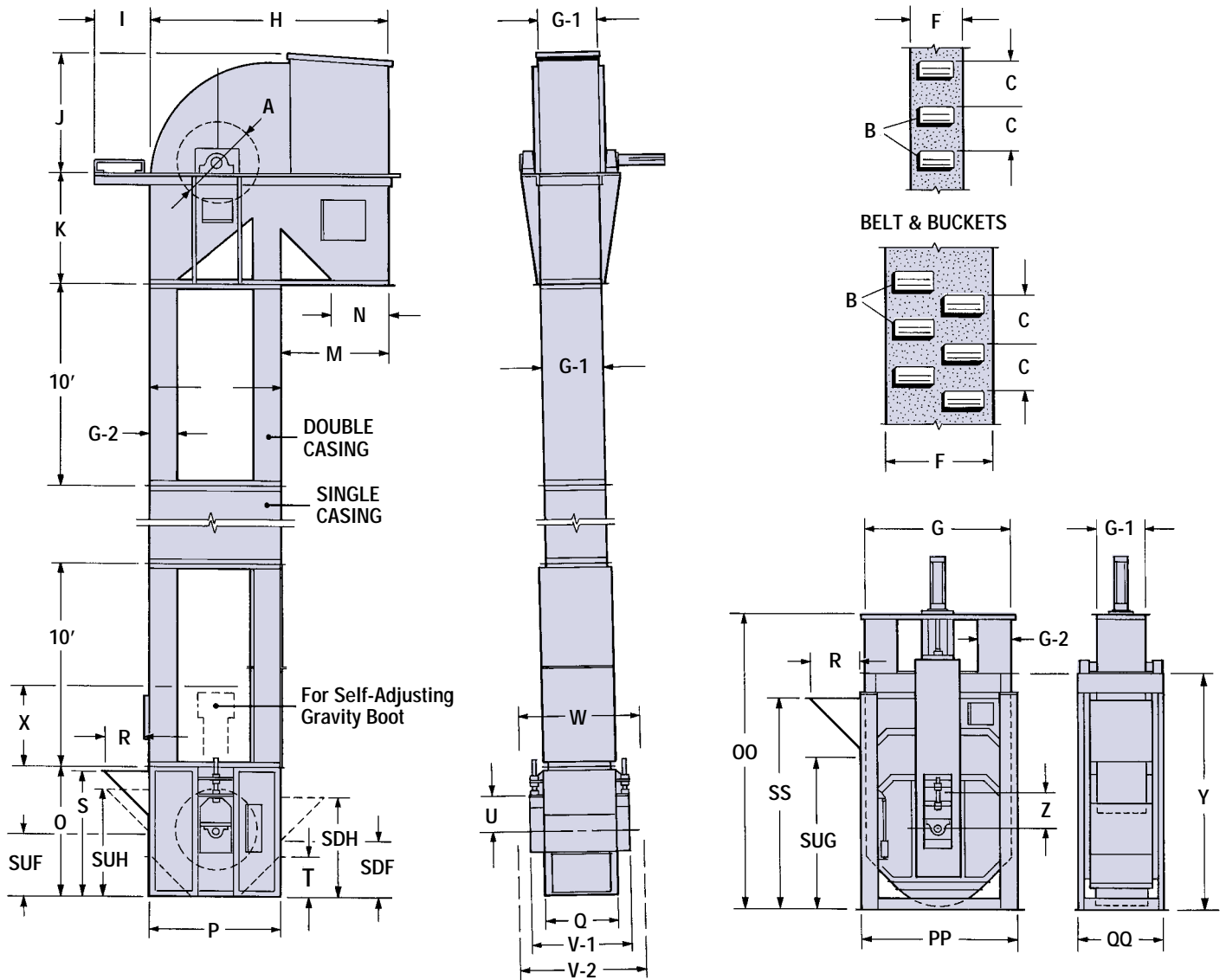


Table of specification dimensions appears on the back page of this brochure.

Each application is unique with its own special capacity requirements, location specifications, materials to be handled, environmental needs, service requirements, clean out solutions and much more.

Each Brock elevating system design undergoes a detailed computer analysis to assure system function. The Brock team has the experience, knowledge and products to complement each elevating system with accessories such as ladder and cage systems, service

platforms, support towers, motion and alignment sensors, and a wide variety of belt, bucket, and drive styles.

Brock can also supplement elevating needs with a complete line of grain handling equipment including en-masse and enclosed roller-belt conveyors, as well as grain storage bins/silos, and grain conditioning and drying systems.

# BROCK COMMERCIAL BUCKET ELEVATOR

## STANDARD SPECIFICATIONS

MODEL	2414			3017		3619	4219		4224	4821		4824	4828	4834	4838	4844		4859	4872	
A	PULLEY DIAMETER	24.75	24.75	24.75	30.75	30.75	36.75	42.75	42.75	42.75	48.75	48.75	48.75	48.75	48.75	48.75	48.75	48.75	48.75	
B	CUP SIZE	6x5	9x5	11x6	12x6	12x7	14x7	12x8	14x8	18x8	14x8	16x8	18x8	20x8	12x8 (2)	14x8 (2)	16x8 (2)	18x8 (2)	16x8 (3)	20x8 (3)
C	CUP SPACING	8	6	7	8	9	9	9	9	9	11	11	10	9.5	9.5	10	10.5	9.75	9.75	9.75
D	PULLEY RPM	76	76	65	70	70	65	60	62	60	56	56	56	56	58	56	56	56	56	56
E	BELT SPEED	492	492	421	563	563	625	672	694	672	715	715	715	715	715	715	715	715	715	715
F	BELT WIDTH	7	10	12	13	13	15	13	15	19	15	17	19	21	27	31	35	39	51	63
G	DAL SECTION	42	42	42	50	50	56	65	65	65	72	72	72	72	72	72	72	72	72	72
G1	SECTION WIDTH	14.5	14.5	14.5	17	17	19	19	19	24	21.25	21.25	24	28	34	38	44	44	59	72
G2	SECTION DEPTH	10	10	10	11	11	11	12.5	12.5	13.125	13.125	13.125	13.125	13.125	13.125	13.125	13.125	13.125	13.125	13.125
H	HEAD LENGTH	64.5	64.5	64.5	88	88	94	109	109	109	119	119	119	119	119	119	119	119	119	119
I	MOTOR MOUNT LENGTH	19	19	19	21.5	21.5	21.5	21.5	21.5	21.5	21.5	21.5	21.5	21.5	21.5	21.5	21.5	21.5	21.5	21.5
J	HOOD HEIGHT	36	36	36	45	45	52.5	56	56	56	68	68	68	68	68	68	68	68	68	68
K	HEAD HEIGHT	36	36	36	48	48	48	54	54	54	60	60	60	60	60	60	60	60	60	60
M	OUTLET OFFSET	22.5	22.5	22.5	38	38	38	44	44	44	47	47	47	47	47	47	47	47	47	47
N	OUTLET SIZE	12 x 14.5	12 x 14.5	12 x 14.5	17 x 17	17 x 17	17 x 19	19 x 19	19 x 19	19 x 24	21.25 sq	21.25 sq	21.25 x 24	21.25 x 28	21.25 x 34	21.25 x 38	21.25 x 44	21.25 x 44	21.25 x 59	21.25 x 72
O	BOOT HEIGHT	44	44	44	56	56	56	60	60	60	72	72	72	72	72	72	72	72	72	72
OO	BOOT HEIGHT (air takeup)	83	83	83	90	90	93	101	101	101	113	113	113	113	113	113	113	113	113	-
P	BOOT LENGTH	42	42	42	50	50	50	56	65	65	65	72	72	72	72	72	72	72	72	72
PP	BOOT LENGTH	46	46	46	54	54	60	69	69	69	76	76	76	76	76	76	76	76	76	76
Q	BOOT WIDTH	17.5	17.5	17.5	21	21	23	23	23	28	25.25	25.25	28	32	38	42	48	48	64	78
QQ	BOOT WIDTH	27.5	27.5	27.5	30	30	32	32	32	37	36	36	39	43	49	63	69	69	84	-
R	HOPPER LENGTH	16	16	16	19	19	19	23	23	23	26	26	26	26	26	26	26	26	26	26
S	HOPPER HEIGHT	44	44	44	54	54	54	58	58	58	70	70	70	70	70	70	70	70	70	70
SS	HOPPER HEIGHT (self-cleaning)	57	57	57	64	64	67	75	75	75	84	84	84	84	84	84	84	84	84	84
SUH	HOPPER HEIGHT (up side min.)	44	44	44	54	54	54	58	58	58	70	70	70	70	70	70	70	70	70	70
SUF	HOPPER FEED POINT (up side min.)	28	28	28	35	35	35	35	35	35	44	44	44	44	44	44	44	44	44	44
SUG	HOPPER FEED POINT (up side min.)	42	42	42	46	49	53	53	53	59	59	59	59	59	59	59	59	59	59	-
SDF	HOPPER FEED POINT (down side min.)	19	19	19	24.5	24.5	25	30	30	30	31	31	31	31	31	31	31	31	31	31
T	CLEAN OUT DOOR HT.	12	12	23	12	16	16	16	12	12	12	18	18	18	18	18	18	18	18	18
U	PULLEY ADJUSTMENT	8	8	8	11	11	11	11	11	11	14	14	14	14	14	14	14	14	14	14
V1	OA BOOT WIDTH	22.5	22.5	22.5	25	25	37.25	27.25	27.25	32.35	30.25	30.25	33	37	43	47	53	53	68	68
V2	OA GRAVITY BOOT WIDTH	33.75	33.75	33.75	36.25	36.25	38.25	38.625	38.625	43.625	40.75	40.75	43.5	47.5	53.5	57.5	63.5	63.5	78.5	78.5
W	WEIGHT BOX WIDTH	35	35	35	37.5	37.5	39.5	38.75	38.75	43.75	38.75	38.75	41.5	45.5	51.5	56.5	61.5	61.5	76.5	76.5
X	MIN. CLEARANCE REQ'D	37.75	37.75	37.75	52.375	52.375	42.375	52.375	52.375	42.375	53.75	53.75	53.75	53.75	53.75	53.75	53.75	53.75	53.75	53.75
Y	BOOT HEIGHT (self-cleaning)	65	65	65	72	72	75	83	83	83	92	92	92	92	92	92	92	92	92	-
Z	PULLEY ADJUSTMENT	11	11	11	11	11	11	11	11	11	14	14	14	14	14	14	14	14	14	-
*	TRUNKING GAUGE 0-160' D.H.	12	12	12	12	12	12	12	12	12	12	12	12	12	12	12	12	12	10	10
*	TRUNKING GAUGE 160'-200' D.H.	10	10	10	10	10	10	10	10	10	10	10	10	10	10	10	10	10	10	10
*	TRUNKING GAUGE (with brace) above 200' D.H.	10	10	10	10	10	10	10	10	10	10	10	10	10	10	10	10	10	10	10
	HEAD GAUGE	10	10	10	10	10	10	10	10	10	7	7	7	7	7	7	7	7	7	7
	HOOD GAUGE	14	14	14	14	14	14	12	12	12	12	12	12	12	12	12	12	12	12	12
	BOOT GAUGE	10	10	7	7	7	7	7	7	1/4"	1/4"	1/4"	1/4"	1/4"	1/4"	1/4"	1/4"	1/4"	1/4"	1/4"
	BOOT SHAFT	2-3/16"	2-3/16"	2-3/16"	2-3/16"	2-3/16"	2-3/16"	2-3/16"	2-3/16"	2-3/16"	2-15/16"	2-15/16"	2-15/16"	2-15/16"	2-15/16"	2-15/16"	2-15/16"	2-15/16"	3-15/16"	3-15/16"
**	CAPACITY BPH	1616	3098	4023	5037	5995	8092	9725	11924	15160	10053	11959	14526	17448	19614	22116	25056	29949	40683	51001
**	CAPACITY TPH	48.2	92.5	120.1	150.4	179.0	241.6	272.3	333.9	424.5	300.2	357.1	433.8	521.1	585.8	660.5	748.3	894.3	1214.8	1523.3
**	CAPACITY MTH	43.7	83.9	109.0	136.4	162.4	219.2	247.0	302.9	385.0	272.3	323.9	383.5	472.7	531.3	599.1	678.7	811.2	1101.9	1381.7
**	CAPACITY CFH	2011	3855	5007	6269	7461	10070	12101	14840	18567	12511	14883	18078	21715	24410	27523	31182	3765	50618	63471

\* Indicated gauge of lower sections. \*\* Capacities are based on dry, free flowing, granular material with proper loading conditions at 48 pounds per cubic foot (769 kilograms per cubic meter).

Excessive loads through guying or optional equipment should be avoided.

In the pursuit of LEADERSHIP THROUGH INNOVATION®, Brock reserves

the right to change specifications without prior notice.

All dimensions are given in inches unless otherwise noted.



**Brock Grain Systems**

**Chore-Time Brock International**

*Divisions of CTB, Inc.*

*Milford, IN • Kansas City, MO • Frankfort, IN*

*Phone: 574-658-4191 or 574.658.9323 (International)*

*Internet: www.brockmfg.com or www.ctbworld.com*

*E-Mail: brock@brockmfg.com*